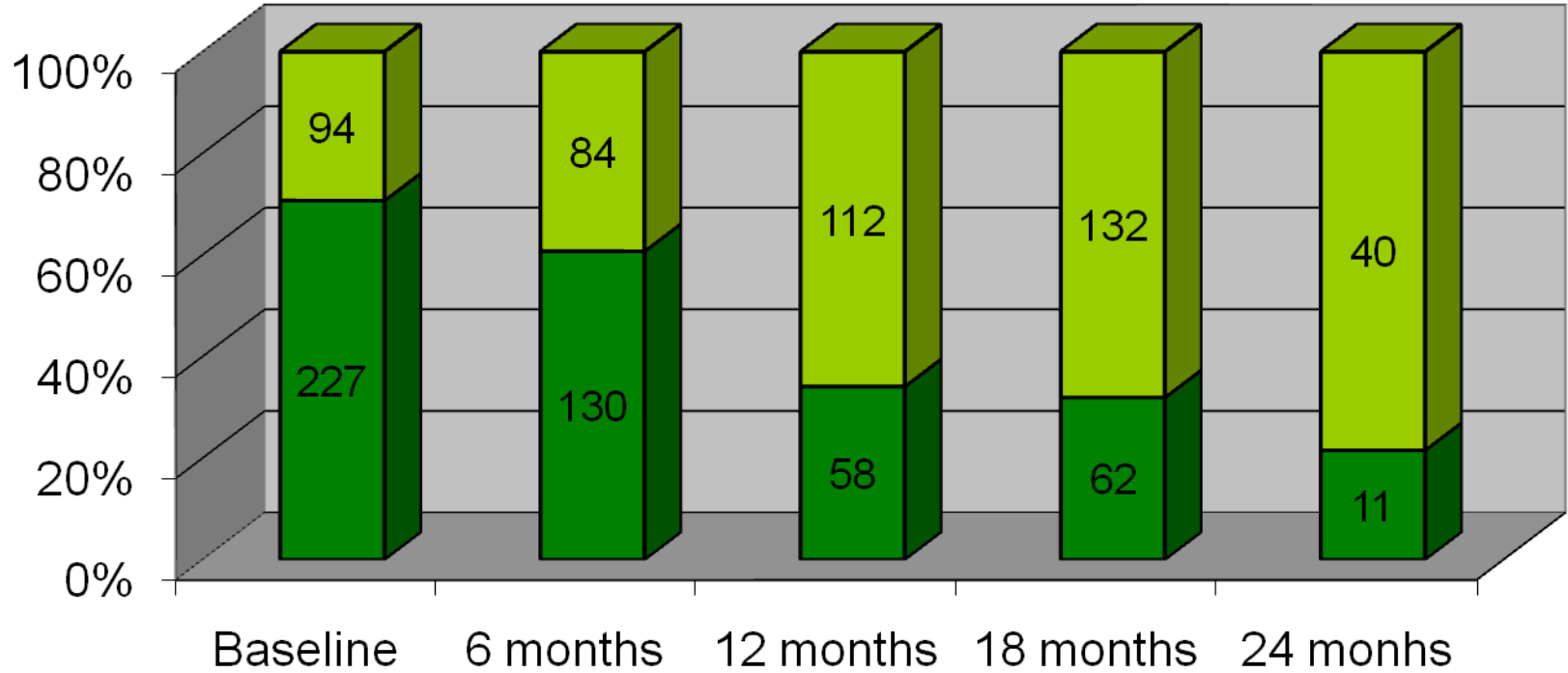


AIDS Care Group

Chester, PA

Timeline and Enrollment Compliance



Time line

■ Pending

■ Completed

Most Frequent Presenting Dental Complaints

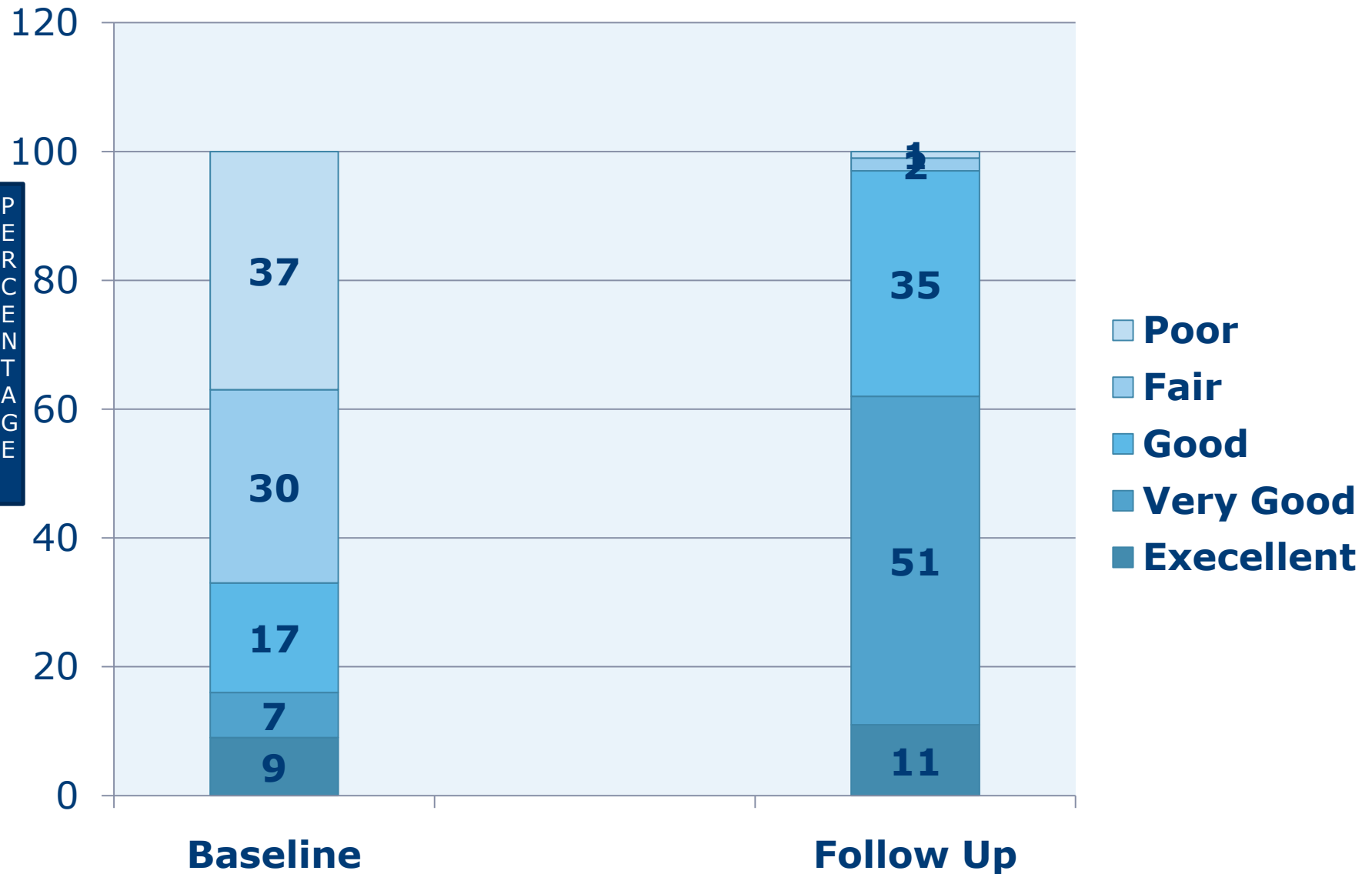
At Baseline:

- Cavities (29%)
- Gums (21%)
- Appearance (20%)
- Sensitive Teeth (19%)
- Bad Breath (11%)

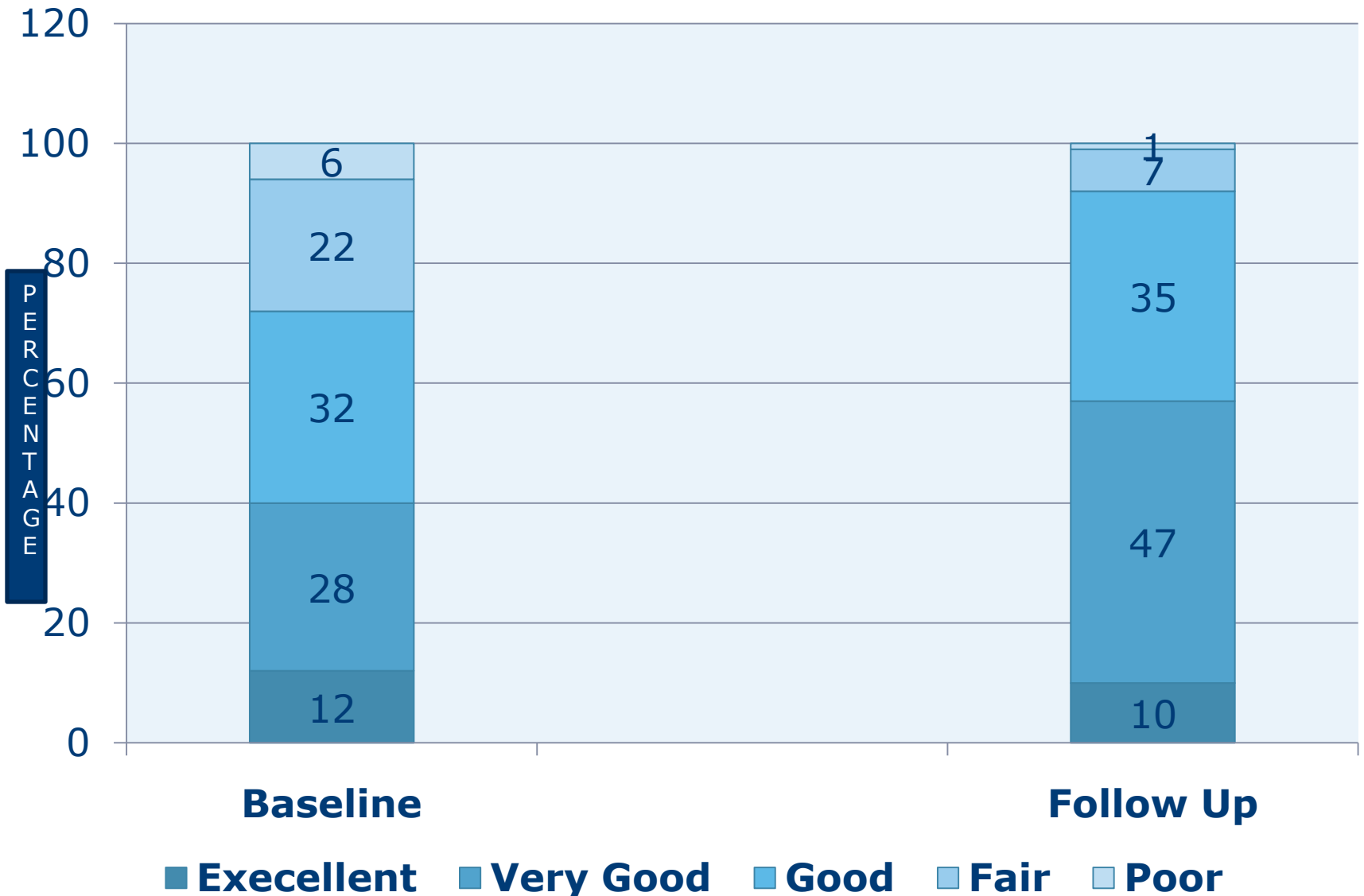
At Follow Up:

- Toothache (42%)
- Pain Jaw (29%)
- Cavities (29%)

Changes in Self-Reported Dental Health Status

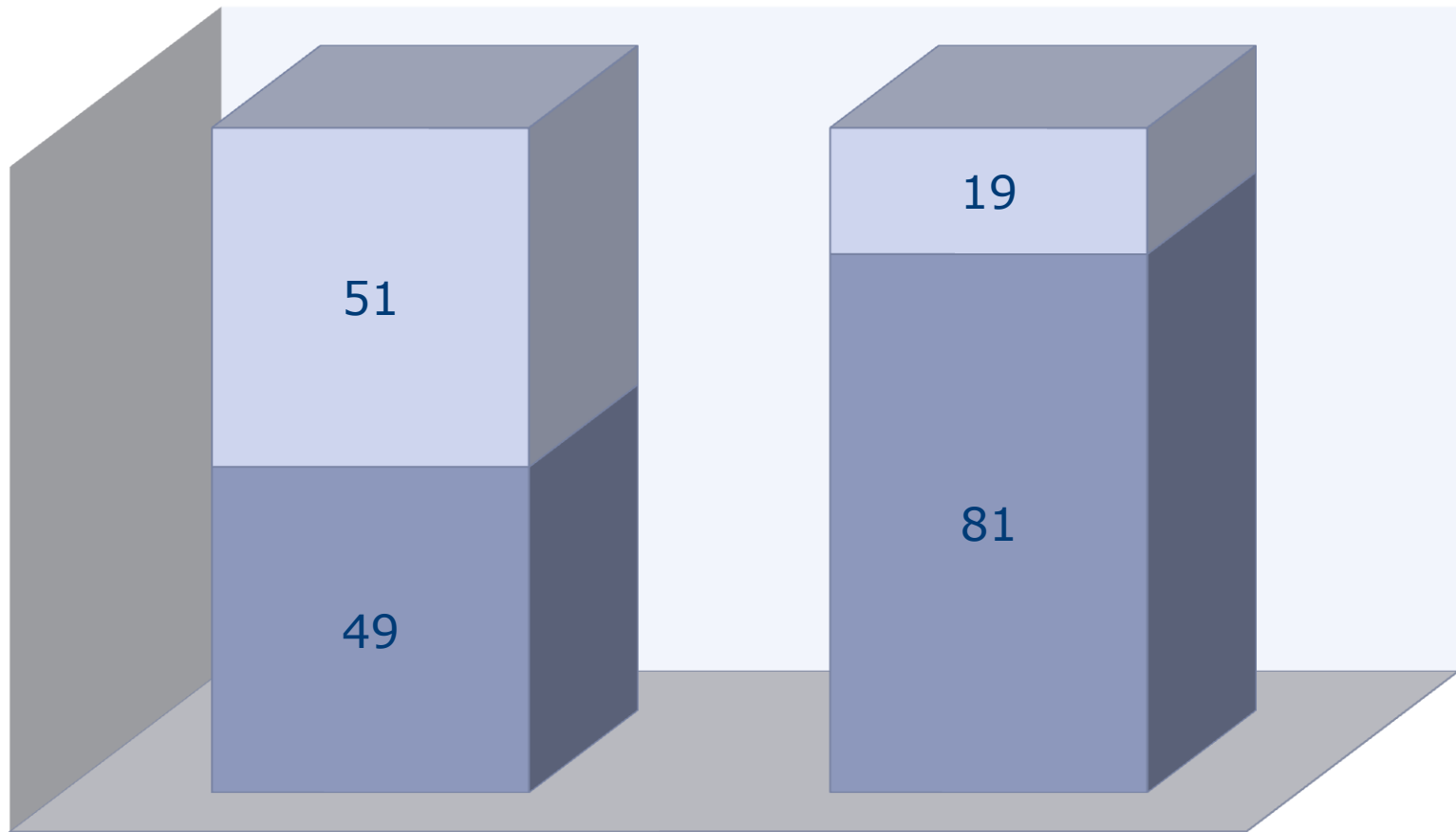


Changes in Self-Reported Health Status



Changes in Reported Coverage of Dental Care Needs

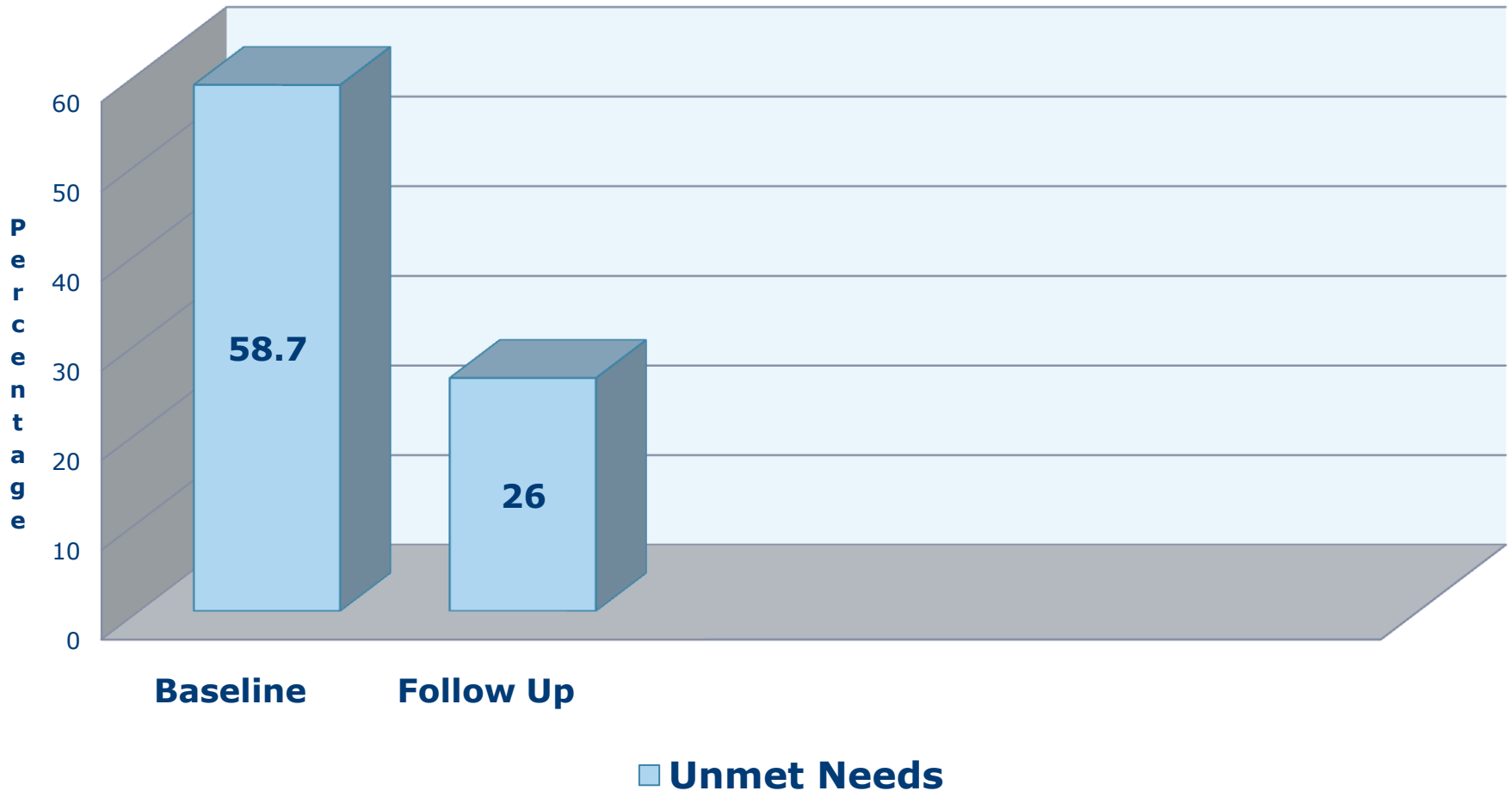
■ Met Needs ■ Unmet Needs



Baseline

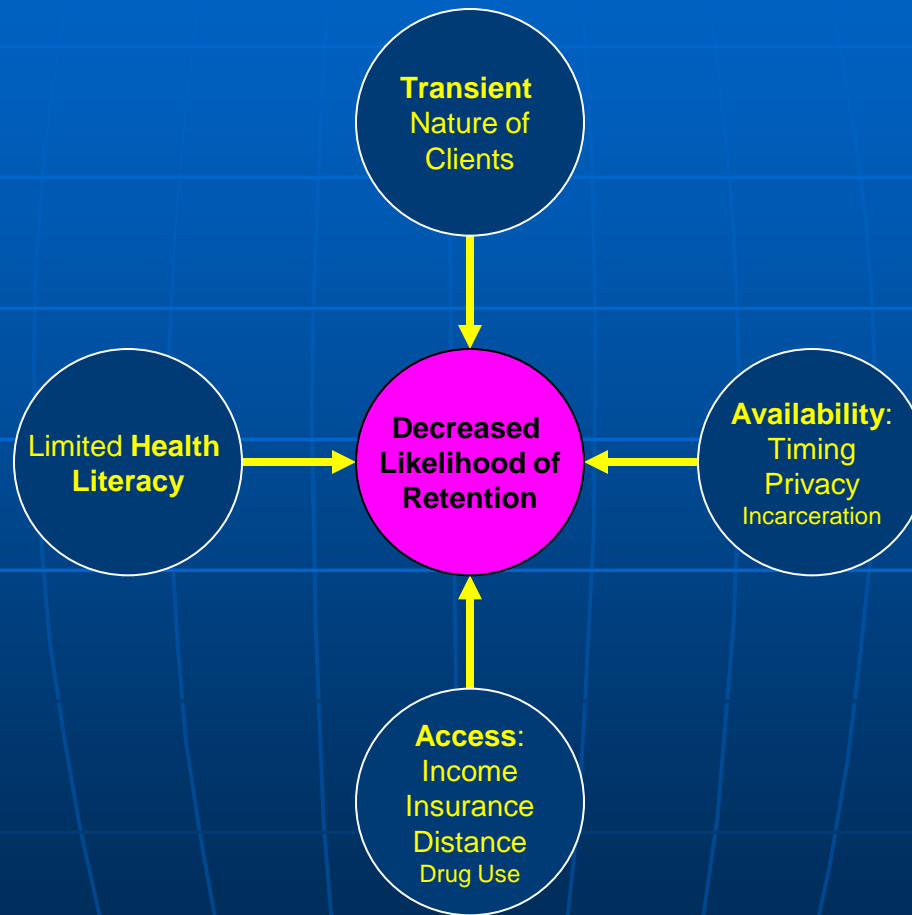
Follow Up

Unmet Dental Care Needs from Extraneous Factors*



* Extraneous Barriers = High Price + No HIV Care Provider + No Transportation + No Appointment + No Good Appointment

Barriers to Retention



Interventions to overcome barriers

